



## PROGRAM ITINERARY

### ► **Saturday, March 5, 2011**

Departure from Washington D.C. on a regularly scheduled international flight.

### ► **Sunday, March 6, 2011**

Arrival in **London!** You are met by a local guide who will conduct a **city tour** introducing you to some of this majestic city's most important sites. After checking in to your hotel take public transport to the **London Eye**. Tonight enjoy a traditional **Welcome Dinner**.

### ► **Monday, March 7, 2011**

Winston Churchill was born at **Blenheim Palace**, built by his ancestor the Duke of Marlborough, John Churchill. Today visit this 18th century palace as well as the neighboring university city of **Oxford**. Also visit the nearby hamlet of **Blandon** where Sir Winston Churchill is buried in a modest churchyard.

### ► **Tuesday, March 8, 2011**

The **Royal Air Force** played a crucial role in the allied victory over Germany. This morning visit the **Royal Air Force Museum**. Later enjoy a free afternoon. Dinner tonight is included at the **Churchill Arms**, or another local pub.

### ► **Wednesday, March 9, 2011**

Continue your exploration of Churchillian London with visits to the **Cabinet War Rooms** and the **Churchill Museum**. At the Churchill Museum you have a specialized guide/lecture. This evening enjoy a **West End theatre performance**.

### ► **Thursday, March 10, 2011**

Today experience the **Imperial War Museum**, where you enjoy a specialized talk. Also visit the **HMS Belfast**, and **Saint Paul's Cathedral**, designed by **Sir Christopher Wren** following the tragic fire



## PROGRAM OVERVIEW

**Sir Winston Leonard Spencer-Churchill** remains an iconic figure of the 20th century. Soldier, journalist, politician, Prime Minister, author, artist, historian, and war-time hero, Churchill was truly a unique figure among his 20th century contemporaries. This colloquium examines Churchill's pivotal role in world and British history. We will engage in a political history ride through the 20th century. Highlights include WWI, WWII, the end of the British Empire, Churchill's role in extending the unique relationship that exists between the U.S. and Great Britain, and finally the dawn of the Cold War and the rise of Soviet Communism in East Europe.

## *The World is Your Classroom*

of 1666 which destroyed much of central London.

### ► **Friday, March 11, 2011**

This morning explore the heart of British Parliamentary democracy with a visit to the **British Parliament**. Meet with a British MP for a discussion on the legacy of Winston Churchill (subject to availability). Later enjoy a tour of the **Globe Theatre**.

### ► **Saturday, March 12, 2011**

Today discover the **Tower of London**. The Tower, actually a medieval fortress built by the Normans in 1066 following their conquest of England, has served as a palace, a prison, and famously an execution site. Later visit the **Museum of London**, which documents the history of this great city from Prehistory to the present-day, and the **Britain at War Experience**.

### ► **Sunday, March 13, 2011**

**Chartwell House** was Churchill's home from 1924 until his death in 1965, today's excursion highlights this historic estate, as well as nearby **Hever Castle**, childhood home of **Anne Boleyn**. Also enjoy free time at the charming village of **Penshurst**.

### ► **Monday, March 14, 2011**

Today enjoy an excursion to **Windsor Castle** via public transportation. Windsor Castle is one of the principal residences of the Queen, and is both the largest inhabited castle in the world, and the oldest in continuous occupation. The castle dates back to the time of William the Conqueror and the string of fortresses he built in 1066 across Southern England. Tonight toast the success of your program with a **Farewell Dinner**.

### ► **Tuesday, March 15, 2011**

Coach transfer to the airport.



## PROGRAM COSTS

### PROGRAM FEE:

Price based on 15 participants: \$2,995

Single supplement: \$895

### *Program fee includes:*

- Round trip transatlantic airfare on regularly scheduled flights
- London transport pass for the duration of the program (zones 1 & 2)
- All programming as listed above
- Accommodation in superior tourist class hotel
- Breakfast daily, other meals as listed above
- All transportation as listed above
- Accident and sickness insurance
- Liability insurance

### *Program fee does not include:*

- Passport and visa fees when applicable
- Drinks with lunch and dinner
- Additional meals
- Personal expenses including laundry, mini-bar charges and telephone calls
- Any other item not listed above

***Please note that all specialized visits are subject to confirmation and may be changed.***

• • •

***Non refundable \$250 deposit due by November 15, 2010***

***Final balance due by December 1, 2010***

## FACULTY LEADERS

### ***Edward DeClair, Ph.D.***

As the Assistant Dean for International Programs, Dr. DeClair has created study abroad opportunities for more than 1,200 Lynchburg College students. During his tenure, LC students have traveled to more than 25 countries. A zealot for international travel, DeClair has led or co- led tours to Argentina, Austria, Belgium, Czech Republic, Costa Rica, France, Great Britain, Greece, Hungary, Italy, Morocco, Spain, Turkey, and Vietnam. DeClair has also completed continuing education programs in the Czech Republic, Germany, and Ireland. His published work focuses on French politics and experiential education in political science. At LC, DeClair also serves as the Director of the college-wide, Westover Honors Program.

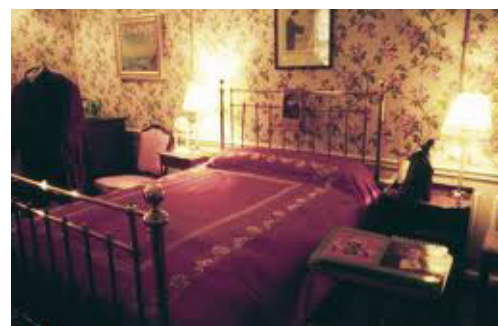
### ***Barbara Rothermel***

**Barbara Rothermel** joined Lynchburg College in 1997. In addition to her responsibilities as the Daura Gallery director, she is Assistant Professor and Coordinator of Museum Studies. She has participated in study abroad programs in Australia, New Zealand, Spain, Italy, France, Morocco, Turkey, Greece, and the U.K., and has traveled extensively worldwide. She earned a Master's in Liberal Studies and Museum Studies from the University of Oklahoma and a B.A. in Art and Cultural History from Hood College. She is currently completing her PhD in Museum Studies through the University of Leicester, U.K., with a dissertation concerning the university art museum as a catalyst for interdisciplinary collaboration.

## ***For More Information:***

**Dr. Edward DeClair**  
Assistant Dean for  
International Programs  
Lynchburg College  
Office Phone: 434.544.8481  
Email: [declair@lynchburg.edu](mailto:declair@lynchburg.edu)

**Robert Magee**  
Executive Director  
Cultural Studies Abroad  
Office Phone: 415.567.5310  
Email: [rmagee@culturalstudiesabroad.com](mailto:rmagee@culturalstudiesabroad.com)



# TERMS AND CONDITIONS

## Accident & Sickness Insurance

CSA includes full medical and accident insurance for every program participant. This coverage includes:

- \$50,000 Accident & Sickness Medical Expense (\$100.00 deductible)
- \$50,000 Emergency Medical Evacuation
- \$25,000 Accidental Death & Dismemberment
- \$10,000 Repatriation of Remains
- Bedside visitation by friend or relative – economy class airfare
- An international assistance center which is available to help 24•hours a day

**Cultural Studies Abroad (CSA)** is the agent for, certain carefully selected carriers, wholesalers and service companies, all of which are disclosed principals and independent contractors. CSA is not responsible for any negligent act or omission by any of these organizations, such as ship or flight delay, cancellations or prevention of the performance of any obligation its part to be performed including, but not limited to, any product sold by CSA resulting from seizures under local process, sanctions, quarantine restrictions, acts of governmental authority, strikes, work stoppages or labor disputes (whether resulting from disputes between carriers and employees, or between other parties), war or hazards incident to a state of war, fire, acts of god or nature including, without limitation, floods, earthquakes or weather conditions, mechanical difficulties, riots or civil commotions, or any other acts, matters of things, whether or not of a similar nature, beyond the control of CSA or its representative carriers, wholesalers and service companies.

**Cultural Studies Abroad** reserves the right to refuse service and /or terminate the participation of any program participant whose health or mental condition or physical infirmity impedes the operation of the program, or whose conduct is discourteous to others or incompatible with the best interests of the group. In case of removal, participant shall have no claim for refund of any kind for any portion of the program, used or unused.

**Accommodations:** Often, quoted hotels are not confirmed until the entire group has made the initial deposit. CSA reserves the right to change hotels, if necessary, within the same category. Changes in hotels do not warrant cancellation by participant without penalty. All rates are based on double occupancy unless otherwise specified.

A limited number of single rooms will be available at a supplemental charge due at the time of final payment

**Alterations to Published Itinerary:** CSA reserves the right to alter, modify, or withdraw the itinerary of any program if air schedules and/or events beyond its control deem it necessary. Itinerary changes made by contractors abroad are beyond the control of CSA and should changes be made, the participant and CSA are bound accordingly.

**Itinerary Deviations:** Extensions after the program must be requested in writing to Cultural Studies Abroad as soon as possible but no later than 90 days prior to departure. A \$50.00 per person deviation fee will apply plus any supplemental airfare. Cultural Studies Abroad assumes no liability or responsibility for any participants deviating from the group program. Participants arriving and departing independently are responsible for their own transfers.

**Not included in the cost of the program:** Visa fees not specifically mentioned; passport and photos; items of a personal nature, such as laundry, telephone calls, beverages or items not covered in included meals; meals not included, optional excursions, excess baggage charges, luggage handling in U.S. at beginning and end of the program; expenses due to flight delays or other irregularities.

**Program Price:** Program prices are based on rates of exchange, land, and air tariffs as of the date of initial deposit and are subject to adjustment due to circumstances beyond the control of CSA, including lack of participation. Any adjustment to the price for these reasons is not grounds for withdrawal with full refund.

**Air Transportation:** Departures from the U.S. are on recognized scheduled air carriers utilizing special group fares. The specific airline, fare used, and itinerary is at the discretion of CSA and is not confirmed until the minimum group size has been met. Airline and schedules are subject to change at all times.

**Cancellation:** Cancellations will only be accepted in writing via email, or mail addressed to Cultural Studies Abroad, 1401 Jones Street, Suite 205, San Francisco, CA, 94109. The date the cancellation is received by CSA shall determine the cancellation date.

**Standard Cancellation Fees:** the standard cancellation fees apply as follows:

- Up to 90 days prior to departure, \$100.00 per person
- Between 90 and 61 days prior to departure, \$250.00 per person
- Between 60 and 31 days, 50% of the program price
- Between 30 days and day of departure, 100% of program price





**March 5 – March 15, 2011**

**Program Number 110305ED**

**Signature (required)** \_\_\_\_\_

First Name \_\_\_\_\_ Middle Name \_\_\_\_\_

Last Name \_\_\_\_\_

Mailing Address \_\_\_\_\_

City \_\_\_\_\_ State \_\_\_\_\_ Zip \_\_\_\_\_

Birth Date: (MM/DD/YY) \_\_\_\_\_ Gender \_\_\_\_\_

Passport Number \_\_\_\_\_ Exp. Date \_\_\_\_\_

Home Phone \_\_\_\_\_ Cell Phone \_\_\_\_\_

Email \_\_\_\_\_

-----  
Emergency Contact \_\_\_\_\_

Relationship \_\_\_\_\_ Home Phone \_\_\_\_\_

Work Phone \_\_\_\_\_ Cell Phone \_\_\_\_\_

Address \_\_\_\_\_

City \_\_\_\_\_ State \_\_\_\_\_ Zip \_\_\_\_\_

-----  
Do you smoke?      Yes \_\_\_\_\_ No \_\_\_\_\_

Please list any medical condition(s), allergies, or any additional information which may help us help you in the event of an emergency:  
\_\_\_\_\_  
\_\_\_\_\_

**Payment:** All programs require a per person deposit of **\$250.00** which must be accompanied by individually signed CSA enrollment/waiver forms. Deposit is due **November 15, 2010**. Final balance will be due **December 1, 2010**.

\_\_\_\_\_ **I have read the accompanying Terms & Conditions and agree to abide by their contents (initial).**